

# STEEL

## News & Views



A Publication Of

109 Madison St. S.E. • P.O. Box 220  
Cascade, IA 52033-0220

Spring 2005

"Innovators in steel and wood components"

WATS (800) 942-4685 • Ph. (563) 852-3231 • Fax (563) 852-5034 • [www.Cascade-Mfg-Co.com](http://www.Cascade-Mfg-Co.com) • [info@Cascade-Mfg-Co.com](mailto:info@Cascade-Mfg-Co.com)

## 054400 Is the Number

For the past several years a concerted effort by many industry trade associations and manufacturers has been made to establish a proprietary number for cold-formed steel (CFS) trusses. This effort has produced results.

Last year the Construction Specifications Institute (CSI) made major changes to the structure of its MasterFormat standard specifications. The previous system, which has been in use for over 40 years, had not taken into account the growth in new materials and technologies. The change retains many of the familiar numbers in the previous 16-division format but will use a six-digit designation instead of the current five-digit system. The number assigned to CFS trusses is 054400.

CSI is urging architectural/engineering firms, corporations, and government agencies to switch from MasterFormat 1995 (MF95) to 2004 (MF04). Educational programs were held at the annual CSI show held recently in Chicago, Illinois. Similar programs are also being offered for local CSI chapters.

As more specifiers change to the MF04 standard there will be more recognition of cold-formed steel (CFS) trusses in the marketplace. Finally, as more tracking agencies such as Reed Construction Data, ARCOM, and 4SPECS.com incorporate Section 054400 as tracking fields, more hard data will become available in the specification and use of CFS trusses.

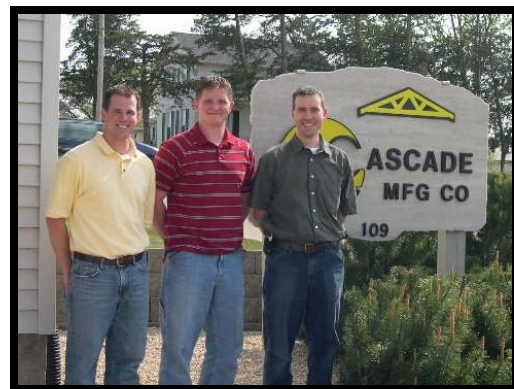
## Departmental Expansion

Cascade Mfg Co has seen continuous growth and interest in CFS trusses. Many calls are received daily from architects and engineers as well as contractors. Requests range from preliminary design requests and budgetary costing to providing bids and furnishing truss projects.

To better serve your needs we have increased staff to accommodate growing requests for information.

Inside Sales at Cascade Mfg Co provides detailed layouts of proposed projects accompanied by preliminary framing plans, truss profiles, and the necessary truss connecting hardware. These elements give contractors a better idea of projected labor costs in order to bid projects using CFS trusses.

Additional value-added items such as attached soffit overhang returns, truss bracing, and flashings are also included in bids.



Cascade Mfg Co Inside Sales department pictured from left to right: Micah Green, Jason Simon, and Tim Noonan.



Light Gauge Steel Engineers Association

Design and Tech Support provides easy to read and follow truss installation placement plans with a comprehensive hardware schedule. 3-D elevation drawings, truss attachment details, and bearing elevation information allows for easy and fast truss erection. Sealed individual truss drawings are included on every project.



Design and Tech Support department staff. Left to right front: Kelly Woollums and Nic Kremer. In back: Dean Lessei and Charles Kies.

## Photo Gallery

Our feature for this edition of *Steel News and Views* is a familiar landmark. Wal Mart stores have become a fixture in most communities.

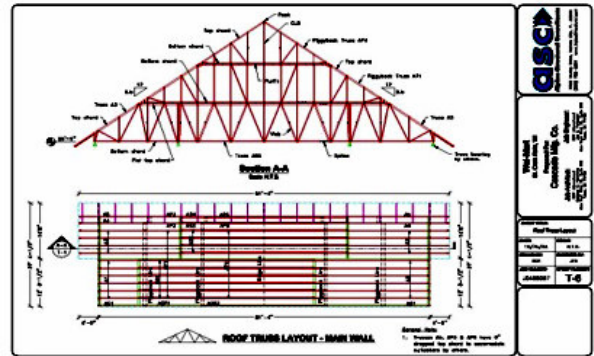
The Wal Mart project, built in St. Croix Falls, Wisconsin, has several interesting features. The most obvious feature is the main entry canopy. The trusses span 91'-4" from overhang to overhang, and with an 8.5/12 roof pitch, the overall height is 31'-2 1/4".

The trusses were built as a "triple-decker" consisting of a base truss built in two halves, a middle tier, and a top tier. Cascade Mfg Co enlisted the aid of Alpine Structural Consultants (ASC) to assist with the truss design and permanent bracing requirements. When assembled this is the largest TrusSteel gable-roof truss ever produced.



Exterior view of main entrance to Wal Mart with the "triple-decker" sections installed.

Scott Lee, project foreman for MacConnell, Inc. the installing contractor, is enthusiastic after his truss installation experience. "Everything with the process from start to finish went great. The trusses were awesome and the design and installation plans were easy to follow. I wouldn't do things any other way." He continues, "The lateral stability and handling of trusses this big really impressed me."



ASC drawing of the main roof truss installation and bracing.

Scott's final comments are indicative of what more and more contractors are telling us, "I don't even want to think about conventionally framing a job when trusses can save so much time."



Exterior view of the completed main entrance.

Do you have a project that might be a candidate for CFS trusses? Call the company that will work with you to design and provide a truss package that will be cost-effective and "contractor friendly."

Put the experience of over 40 years of experience in the design and fabrication of trusses to work for you. Call Cascade Mfg Co at 800/942-4685.

Our people make the difference!