



# Cascade Lumber & Manufacturing Company

# *DIMENSIONS*

A Publication for Employees, Friends & Family

Winter 2015

*"Woodn't"  
You Say. . .*  
by Ray Noonan, Jr.



### THE GIFT OF YOUR TIME

During the time of Winter, as we begin to look forward to the coming of Spring, we can pause and look back to a couple of recent fun Company events. The first of these was the Cascade Holiday Party held in December. There was a great turnout. Everyone enjoyed a delicious meal while the evening was livened up by some nice attendance gifts.

In the picture to the right, veteran driver Ron Kelchen is being recognized for his 25 years of service and is being presented with a wristwatch noting the contributions Ron has made during his time with us.



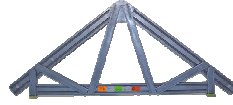
The Pleasantville Holiday Party was held in January. Again, there was a great turnout with everyone enjoying a great meal also livened up by attendance gifts. Pictured left to right are Mark Simons, Eric Bauer, and Mike Noonan.



Both events offered the occasion to enjoy one another's company in an off-work setting and to recognize the contribution of time all of you make to our

company whether that be 25 years of service or the 10 year anniversary of Pleasantville which is this coming March 17<sup>th</sup> St Patrick's Day!

Thanks to each of you who give to this Company what our Creator gives the exact same amount of to every one of us, the gift of your TIME!



### Steel Components Division Update

By: Tim Noonan



### *Introducing Emmett Koen*

By now I'm sure everyone is aware of our steel truss division expansion where we will soon be opening a manufacturing facility in Tyler, TX. As part of this initiative, we've brought on board Emmett Koen to serve as our outside sales and marketing representative in the states of Arkansas, Louisiana, New Mexico, Oklahoma, and Texas. As we've steadily increased our footprint in Arkansas, Oklahoma, and Texas over the past few years, and with the Tyler facility and Emmett's background, the neighboring states of New Mexico and Louisiana are a logical next step. Emmett hails from Canton, TX, just forty miles from Tyler. With his past work experience, Emmett possesses a wide skill set that will be invaluable in assisting with the initial setup of the plant. And most importantly, Emmett brings over a decade's worth of experience in the sale of steel truss and wall panel components, so he knows the business and the customer base very well. Many of you may not get a chance to meet Emmett face-to-face but as he works hard in sales efforts on our behalf, hopefully many of you will feel the results of his efforts as we book more and more work in his territory to make our venture a successful one. Please join me in welcoming Emmett to the Cascade family, and we'll look forward to other new employees in Tyler as we bring the plant online.

*Spring is right around the corner!!!*



## Lean Lumber

By: Scott Wagner

### ANOTHER YEAR IN THE BOOKS

2014 is officially in the books, and what a busy year it was! Below are some statistics from the year.

- Combined, the wood component plants assembled over 11,623,244 board foot of trusses, requiring 74,580 employee hours to do it.
- The steel truss plant used 1,443,561 screws and 27,200 employee hours to assemble trusses that were delivered all across the continental United States.
- Truck drivers drove approximately 685,311 miles to deliver wood components out of the Cascade and Pleasantville plants, and another 336,873 miles to deliver steel components out of the steel plant. This number includes our drivers as well as contract carriers. The 1,022,184 combined miles is the equivalent of traveling around the world 41 times! Our drivers alone logged over 24,655 hours delivering product.

Tim Groves has started his new role as Safety Manager. Tim brings with him experience building both wood and steel components, as well as engineering wood components. Despite his status as a Seattle Seahawks fan, Tim will be a valuable asset to the company. Please feel free to approach Tim with any safety concerns or ideas....or just to ask him why the Seahawks didn't run the ball the last play of the Super Bowl!



## Cascade Lumber

By: Kevin Schockemoehl

### Monticello Carpet and Interior update:

Things are getting exciting at the new store site in Monticello! As I'm sure you recall, we lost the old building to fire, and have been working to replace that store with a new, permanent structure. While the rented, temporary space has allowed us to continue to serve our customers, it will be great to be back in our own, new, bright building.

Currently, the exterior is completed, except for the doors. Work is being done to install the electrical, heating and lighting, with sheetrock and painting soon to follow. Our hope is to have everything completed and be able to move sometime in early spring. Be sure to stop in and see the project once it is complete!

### CONGRATULATIONS TO MIKE FARR!!!!

Mike Farr has been heavily involved in NAHB, HBAI and the Cedar Rapids HBA for many years and in many capacities. Those world-class volunteer efforts were honored by his inclusion into the Society of Honored Associates at an awards banquet at IBS (International Builders Show). This is a lifetime reward intended to distinguish those members who have made invaluable contributions to the building industry. This prestigious award is given to Associate members who are chosen as finalists for the Associate of the Year Award. Upon induction, members have the opportunity to be automatically reconsidered for the Associate of the Year Award for their first two years following induction. Awesome!

Thanks Mike for all that you do!



Hope you enjoyed the latest edition of the Dimensions. If you have ideas for future items or features, please contact: Laura Loes via email: [laloes@cascade-mfg-co.com](mailto:laloes@cascade-mfg-co.com)