

100 PSF Live Load & 40 PSF Dead Load

Depth	Live Load Deflection Criteria = L/360 Total Load Deflection Criteria = L/240				Live Load Deflection Criteria = L/480 Total Load Deflection Criteria = L/360			
	On-Center Spacing				On-Center Spacing			
	12"	16"	19.2"	24"	12"	16"	19.2"	24"
12"	24'-6"	23'-2"	21'-5"	20'-1"	22'-7"	20'-1"	18'-11"	17'-7"
14"	28'-6"	26'-3"	24'-11"	21'-4"	25'-7"	23'-3"	19'-10"	18'-5"
16"	32'-6"	29'-10"	27'-10"	25'-11"	29'-0"	25'-11"	24'-5"	22'-7"
18"	36'-2"	33'-0"	30'-10"	28'-6"	31'-9"	28'-10"	26'-9"	24'-10"
20"	39'-5"	35'-9"	33'-5"	31'-2"	34'-9"	31'-4"	29'-5"	27'-3"
22"	42'-6"	38'-6"	36'-2"	33'-8"	37'-5"	34'-0"	31'-8"	29'-4"
24"	44'-9"	41'-4"	38'-11"	36'-1"	39'-10"	36'-4"	34'-0"	31'-3"

80 PSF Live Load & 25 PSF Dead Load

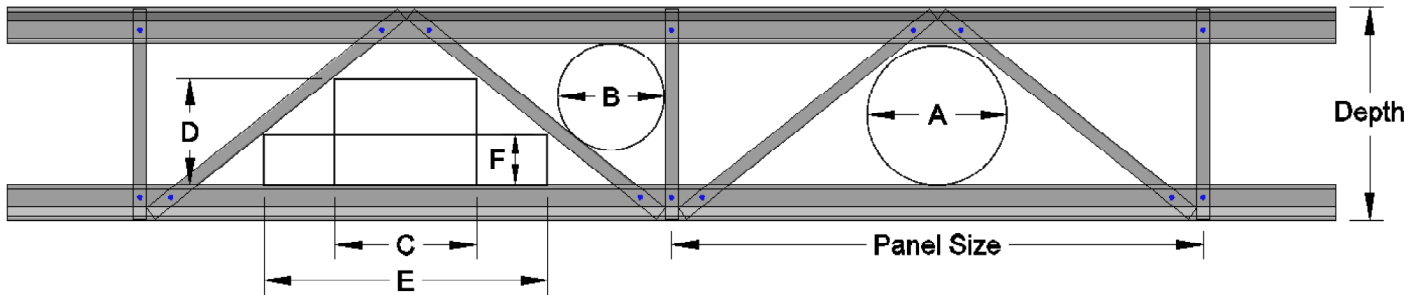
Depth	Live Load Deflection Criteria = L/360 Total Load Deflection Criteria = L/240				Live Load Deflection Criteria = L/480 Total Load Deflection Criteria = L/360			
	On-Center Spacing				On-Center Spacing			
	12"	16"	19.2"	24"	12"	16"	19.2"	24"
12"	24'-6"	24'-6"	23'-7"	21'-6"	24'-5"	22'-4"	21'-0"	19'-2"
14"	28'-6"	28'-4"	26'-9"	24'-9"	27'-7"	25'-4"	23'-11"	22'-2"
16"	32'-6"	32'-0"	29'-8"	27'-10"	31'-4"	28'-9"	26'-11"	24'-11"
18"	36'-6"	35'-2"	33'-3"	30'-10"	34'-10"	31'-6"	29'-10"	27'-8"
20"	40'-6"	38'-5"	36'-4"	33'-5"	38'-0"	34'-7"	32'-5"	30'-0"
22"	44'-6"	41'-7"	39'-0"	36'-1"	41'-1"	37'-5"	35'-1"	32'-5"
24"	48'-0"	44'-5"	38'-11"	38'-9"	44'-2"	39'-11"	37'-2"	34'-8"

40 PSF Live Load & 40 PSF Dead Load

Depth	Live Load Deflection Criteria = L/360 Total Load Deflection Criteria = L/240				Live Load Deflection Criteria = L/480 Total Load Deflection Criteria = L/360			
	On-Center Spacing				On-Center Spacing			
	12"	16"	19.2"	24"	12"	16"	19.2"	24"
12"	24'-6"	24'-6"	24'-6"	24'-6"	24'-6"	24'-1"	23'-2"	21'-0"
14"	28'-6"	28'-6"	28'-6"	28'-4"	28'-6"	27'-11"	26'-3"	24'-6"
16"	32'-6"	32'-6"	32'-6"	32'-1"	32'-6"	31'-7"	29'-10"	27'-2"
18"	36'-6"	36'-6"	36'-6"	35'-6"	36'-6"	34'-10"	32'-8"	33'-3"
20"	40'-6"	40'-6"	40'-6"	38'-6"	40'-6"	38'-4"	35'-11"	33'-1"
22"	44'-6"	44'-6"	43'-6"	41'-1"	44'-6"	41'-2"	38'-8"	35'-8"
24"	48'-6"	47'-11"	45'-8"	43'-1"	48'-6"	44'-0"	41'-3"	38'-3"

40 PSF Live Load & 15 PSF Dead Load								
Depth	Live Load Deflection Criteria = L/360 Total Load Deflection Criteria = L/240				Live Load Deflection Criteria = L/480 Total Load Deflection Criteria = L/360			
	On-Center Spacing				On-Center Spacing			
	12"	16"	19.2"	24"	12"	16"	19.2"	24"
12"	24'-6"	24'-6"	24'-6"	24'-6"	24'-6"	24'-6"	24'-6"	24'-6"
14"	28'-6"	28'-6"	28'-6"	28'-6"	28'-6"	28'-6"	28'-6"	27'-7"
16"	32'-6"	32'-6"	32'-6"	32'-6"	32'-6"	32'-6"	32'-6"	31'-5"
18"	36'-6"	36'-6"	36'-6"	36'-6"	36'-6"	36'-6"	36'-6"	34'-6"
20"	40'-6"	40'-6"	40'-6"	40'-6"	40'-6"	40'-6"	40'-6"	37'-11"
22"	44'-6"	44'-6"	44'-6"	44'-6"	44'-6"	44'-6"	44'-1"	40'-9"
24"	48'-6"	48'-6"	48'-6"	47'-6"	48'-6"	47'-11"	47'-0"	43'-6"

Maximum distances shown are for clear span applications with chase opening located at mid-span. Span ratings shown shaded are limited by length to depth ratio of 24. Factors such as end bearing conditions, off-center chase openings and specific web patterns may also influence span capabilities. Contact your local Authorized TrusSteel Fabricator for design assistance utilizing project specific span, depth, loading and deflection criteria.



Approximate Duct Opening Sizes for TrusSteel Floor Trusses							
Depth	Panel Size	A	B	C	D	E	F
12"	60"	5"	4-7/8"	14"	4-3/8"	20"	3-3/8"
14"	60"	7"	6-5/8"	17"	5"	22"	4-1/8"
16"	60"	9"	8-1/4"	14"	7-3/8"	27"	4-1/8"
18"	60"	11"	9-7/8"	14-1/2"	8-7/8"	26"	5-3/8"
20"	60"	13"	10-1/2"	14-1/2"	10-3/8"	26"	6-5/8"
22"	60"	14-3/4"	11-1/2"	15"	11-5/8"	30"	6-1/8"
24"	60"	16-1/2"	12-3/8"	16"	12-5/8"	32"	6-3/8"